

Automatic filling flow divider FST883

Device for the flexible division of filling flows



Identical filling flows under all conditions.

The flow of product discharged from a filling machine inevitably leads to problems in filling at accurate weights if this flow has to be divided up into different filling flows for subsequent processing. The VEMAG filling flow divider FST883 solves this problem. Completely identical filling flows under all production conditions guarantee filling at accurate weights and thus extremely consistent product quality.



3-track filling flow divider FST883

The filling flow divider is based on the rotor principle. The rotor elements run in separate chambers thus generating completely identical filling flows to ensure filling at extremely accurate weights. As the divider has no drive of its own, undesired temperature increases which might lead to quality problems are reliably avoided.

Use

The filling flow divider is designed as an attachment for vacuum fillers and is fitted directly to the outlet of the filling machine. The link to the following processing stage is by hoses or tubes. Different lengths have no effect on filling accuracy. The system can be flexibly adapted to the customer-specific application in question. Division into individual filling flows can be selected at will. The flexibility of the system means that in many cases, it can be integrated into existing production lines. Whether products are to be filled, portioned or shaped, weight accuracy will be improved considerably by inserting the filling flow divider.

Fully automatic operation

The filling flow divider works fully automatically. The operator does not have to make any manual settings to the machine. This ensures a high level of product standardisation.

Cleaning and maintenance

The filling flow divider consists entirely of stainless steel and plastic approved for contact with foodstuffs. The individual components are easy to clean with the aid of low-pressure cleaning equipment. The filling flow divider is maintenance-free.

Applications

The filling flow divider can be operated with the following filling machines:

- ROBOT 500
- ROBBY / ROBBY-2
- HPE-series
- DPE-series

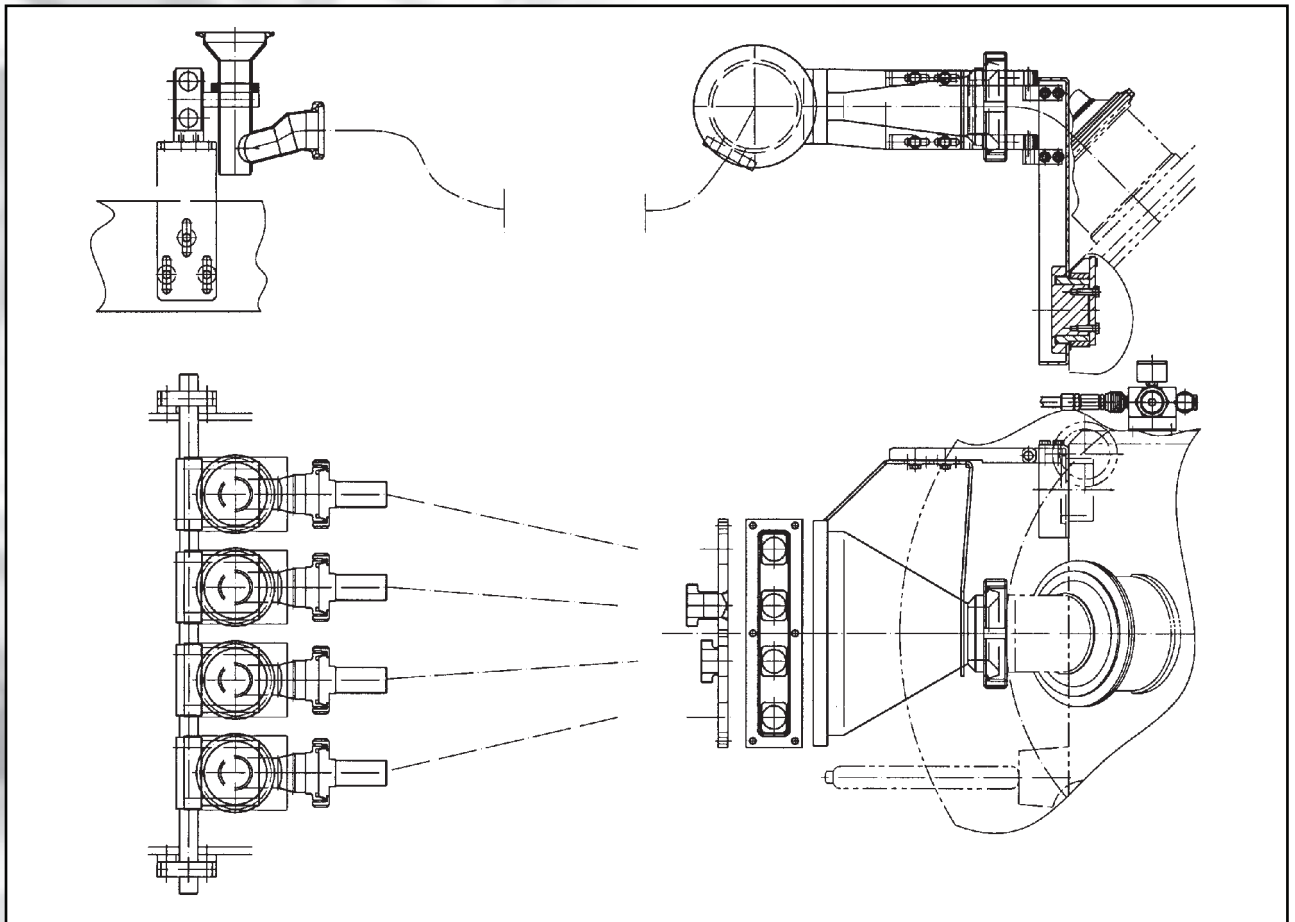
The filling flow divider can be integrated into the following production lines:

- multiple-track processing of meat, fish, cheese or vegetable fillings for manufacturing filled products using coextrusion devices
- multiple-track filling of viscous to free-flowing products (including delicatessen and salad products) into tins or moulds using the 981 filling head
- multiple-track portioning and cutting of viscous to solid products with the aid of pneumatic cutting devices
- multiple-track discharge of flat products through slit nozzles



Technical data

Chamber spacing: 44,5 / 76 mm
Clamp joint, outlet connection: DN 50 as per DIN 32 676



VEMAG Maschinenbau GmbH
P.O. Box 1620, D-27266 Verden
Phone +49 42 31 - 77 70, Fax +49 42 31 - 77 72 41
<http://www.vemag.de>, e-mail@vemag.de

Presented by: